



ATRIA

luxury apartment homes

AMENITIES:

Saltwater Pool w/ Wi-Fi Sun Deck
Wired for Today's Technology
Car Care Center
Fit: LifeFitness® Cardio Theatre, Resistance & Free Weights
Gourmet Coffee & Hot Tea Bar
California Outdoor Kitchen
Leisure Courtyards for Outdoor Grilling & Dining
Social: Business Center, Shuffle Board, Billiard, Lounge & Game Area
Large Pet Friendly

FEATURES:

Garden Tubs*
Custom Glass Showers w/ Rain Shower Heads*
Large Walk-In Closets
Gourmet Kitchens
Upscale Wood Style Plank Flooring*
Custom Routed Wood Cabinetry w/ Brushed Nickel Hardware
Designer Tile Backsplash in Kitchen
Lofty Nine Foot Ceilings w/ Crown Molding
Power Saving Digital Programmable Thermostats
Home Intrusion Alarms w/ Optional Monitoring
2" Plantation Blinds
Ceiling Fans w/ Lighting in Bedrooms & Living Room
Stylish Track & Pendant Lighting
Two Tone Paint Color Scheme
Full Size Washer & Dryer Included
Private Patio or Balcony
Garages Available*



866.554.7779

8601 S. Mingo Road
Tulsa, OK 74133

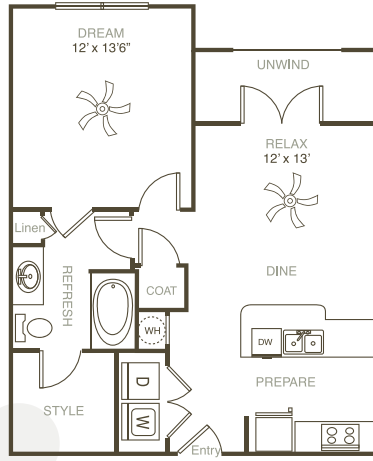
AtriaApartments.com

A1 A1

1 Bedroom
1 Bath

661 APPROX SQFT

*exact dimensions and features may vary with each floor plan

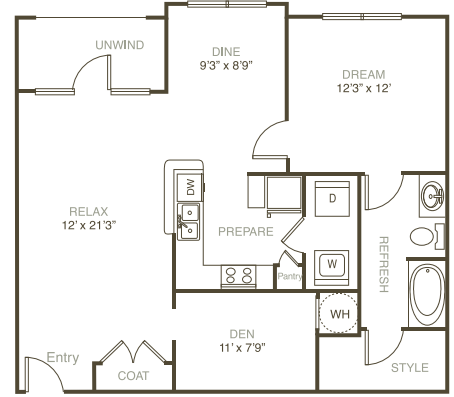


A2 A2

1 Bedroom
1 Bath

983 APPROX SQFT

*exact dimensions and features may vary with each floor plan

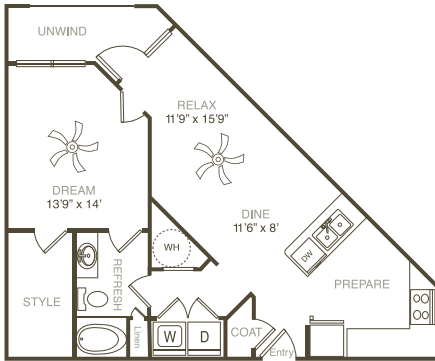


A3 A3

1 Bedroom
1 Bath

768 APPROX SQFT

*exact dimensions and features may vary with each floor plan



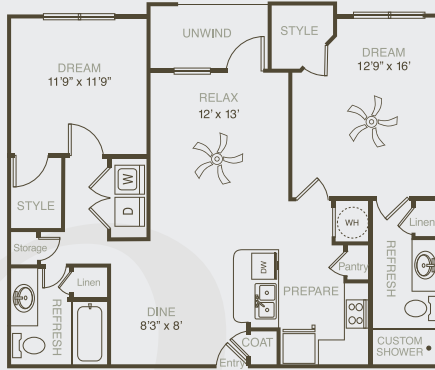
ATRIA
luxury apartment homes

B1 B1

2 Bedroom
2 Bath

1103 APPROX SQFT

*exact dimensions and features may vary with each floor plan

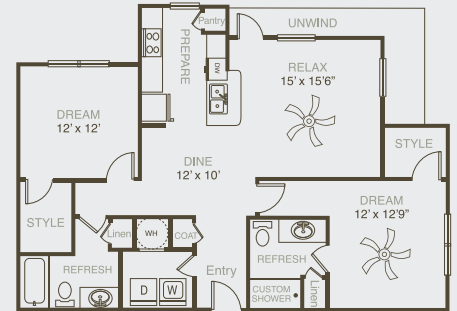


B2 B2

2 Bedroom
2 Bath

1218 APPROX SQFT

*exact dimensions and features may vary with each floor plan

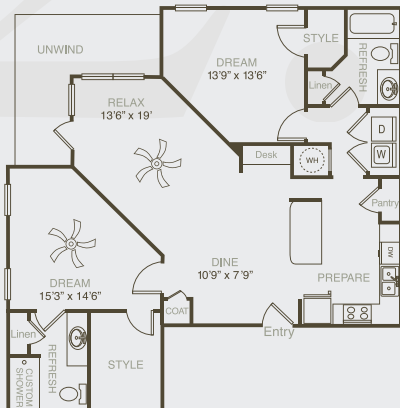


B3 B3

2 Bedroom
2 Bath

1280 APPROX SQFT

*exact dimensions and features may vary with each floor plan



C1 C1

3 Bedroom
2 Bath

1515 APPROX SQFT

*exact dimensions and features may vary with each floor plan

